



29 Ocean Street,
Kwinana Beach WA 6167

X  @summitfertz

www.summitfertz.com.au



Summit Fertilizers Products & Services Guide



What makes **Summit** great

At Summit, we are dedicated to seeing WA farming communities prosper by offering a wide range of technical services and an extensive selection of high quality fertilizers.

Backed by our highly experienced, Fertcare accredited Area Manager network and Field Research team, we go further to understand your soil and plant nutrition, working together as partners providing realistic fertilizer recommendations.

We aim to provide you with confidence to use the right nutrients, at the right time, and in the most profitable way.

Contacts and Depots

Kwinana Sales Office

Freecall: **1800 198 224**

Email: **sales@summitfertz.com.au**

Head Office: **(08) 9439 8999**

Kwinana

Phone: **1800 199 331**

weighbridge@summitfertz.com.au

Geraldton

Phone: **9960 8100**

geraldton@summitfertz.com.au

Bunbury

Phone: **9724 2700**

bunbury@summitfertz.com.au

Albany

Phone: **6819 6300**

albany@summitfertz.com.au

Esperance

Phone: **9076 4100**

esperance@summitfertz.com.au



FERTCARE®
Fertcare accredited and audited

Keeping it Local

Our Area Managers live and work in your local communities and understand what matters most for your farm to succeed, backed with a wealth of agricultural knowledge and recommendations customised to your needs.

Geraldton Depot



Geraldton
Murray Simkin
0429 947 919



Coorow
Juliet McDonald
0429 945 332



Moora
Alana Alexander
0417 490 047



Wongan Hills
Saritha Marais
0429 579 541



Kellerberrin
Tracey Hobbs
0429 470 007



Merredin
Kobus Marais
0427 766 508

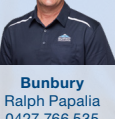
Kwinana Depot



Northam
David Armstrong
0477 109 545



Corrigin
Steve Cooke
0429 934 243



Williams
Mark Stephens
0427 788 521



Narrogin
David Hull
0477 923 684



Lake Grace
Brett Coxon
0427 766 506



Esperance (West)
Matt Ryan
0408 092 355



Esperance (East)
Nick Donkin
0428 715 045

Bunbury Depot



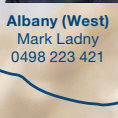
Bunbury
Ralph Papalia
0427 766 535



Kojonup
Chloe Turner
0447 469 245



Albany (East)
Andrew Wallace
0427 083 820



Albany (West)
Mark Ladny
0498 223 421

Albany Depot

Esperance Depot

inSITE: Industry leading analysis

Summit inSITE is our industry leading Fertcare accredited soil and plant analysis program delivered by our team of experienced Area Managers.

Your soil and plant test results will be interpreted by your Local Area Manager, in addition to the raw data, you'll get specific recommendations to deliver the nutrients required to achieve target yields.

Receive tailored reports based on our extensive Field Research results and Area Manager experience of local conditions and growing practices.

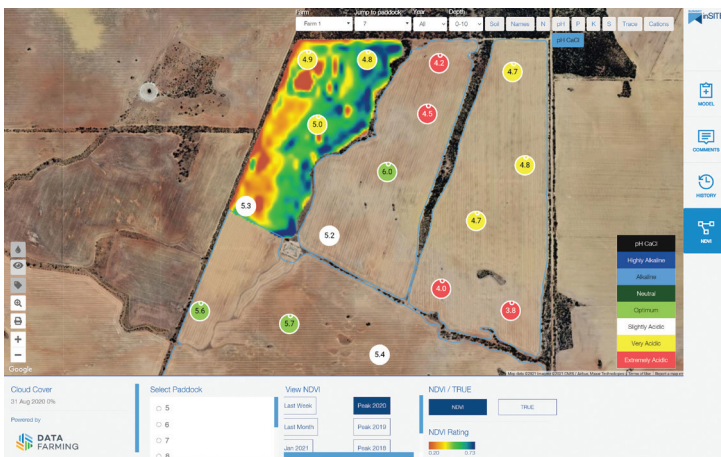
Key Benefits of Summit Soil and Plant Analysis

- Independent laboratory.
- Rapid turnaround times.
- Wide range of analytes measured.
- View and download your results on SummitConnect.
- Customer owned data.

Trend Maps

Our trend maps allow a visual interpretation of soil test results across different depths and growing seasons, all so you can get a better idea of how your farm is performing over time. Through SummitConnect, our online customer portal, you can view trend maps from the comfort of your own home.

As part of our collaboration with DataFarming, we've integrated NDVI biomass satellite imagery into our trend maps, allowing our Area Managers and clients to pinpoint on-ground issues and better identify areas in paddocks for soil and plant testing.



A Summit Trend map, with Paddock boundaries, showing soil test pH results at 0-10cm overlaid with NDVI satellite imagery.

SummitConnect



SummitConnect is available on the Summit Fertilizers App. Download from App Store or Google Play today.

A Simple & Convenient Way to Oversee your Fertilizer Transactions

The user-friendly interface allows customers to view:

- Orders – See details of all of your orders with Summit, including collection month and payment terms.
- Collections – View individual fertilizer collections, download loading and weight dockets.
- Transactions – Review your payments, credit limit, monthly statements and download your tax invoices.
- Emissions – Monitor your carbon footprint with this new feature.

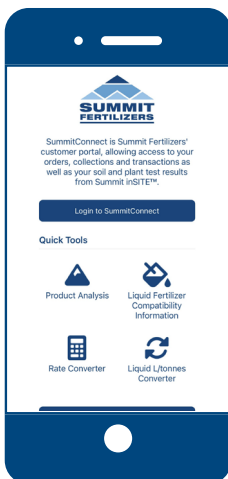
Your inSITE Reports Available Anytime & Anywhere

With SummitConnect, you can view your entire soil and plant test history, including recommendation reports in one place and trend maps that visualise soil nutrient movements.

In-Season NDMI images are available through our partnership with DataFarming. Ultimately it's about providing our customers with accurate data, in the most accessible way, enabling them to make better decisions on fertilizer inputs for next season and beyond.

Sign Up Today

Signing up for SummitConnect is easy. Get in touch with your local Area Manager to register and find out more.



Did you know?

The Summit Fertilizers App also has a range of Quick Tools.

- Product Analysis
Providing typical analysis and product bulk density
- Liquid Fertilizer Compatibility Information
Suggested product compatibility with Summit Fertilizers liquid fertilizer range
- Rate Converter
- Liquid L/tonnes Converter

Our **research**, your results

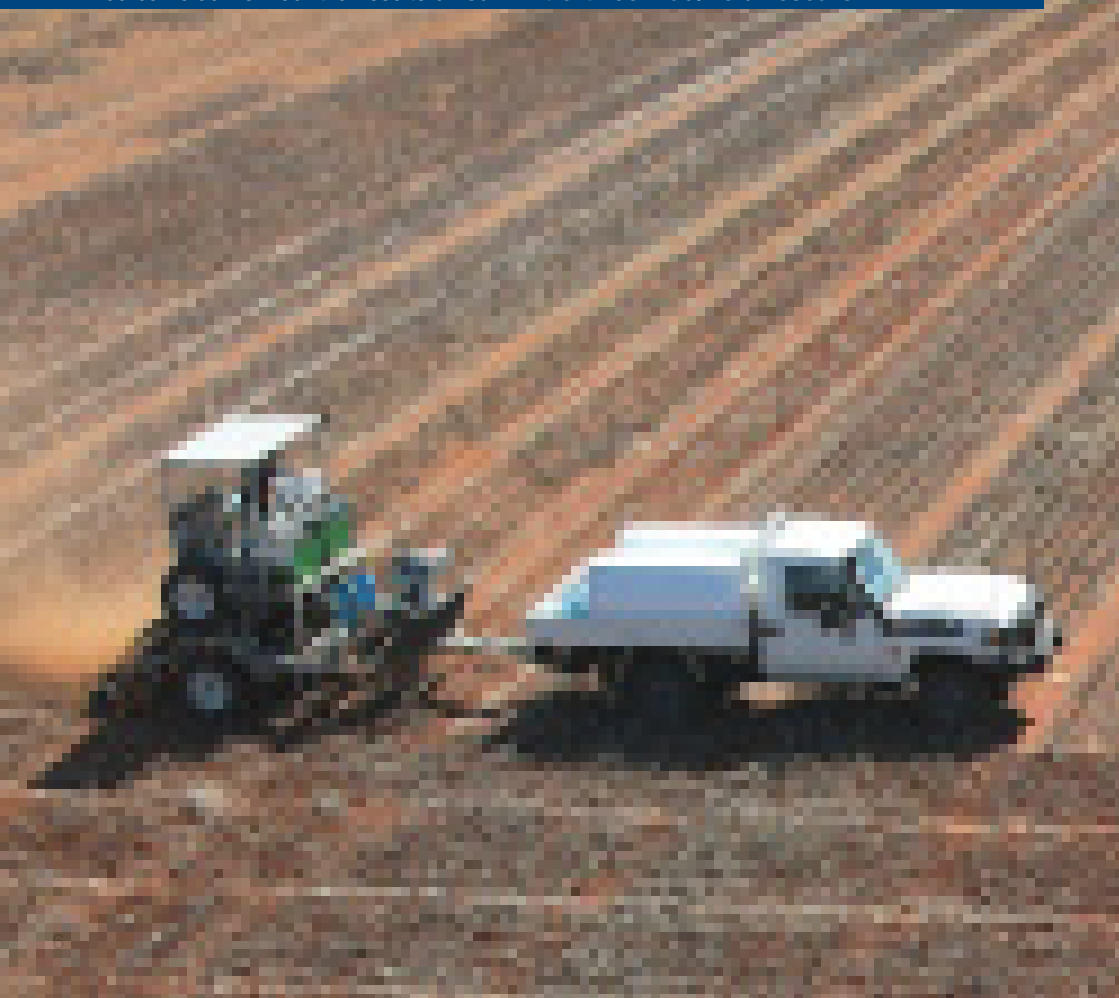
Summit's field research program covers the length and breadth of the entire Western Australian agricultural area.

The direction of Summit trial work is largely driven by grower needs and questions. The Field Research team enjoys working alongside farmers and collaborating with grower groups and research organisations to get the most out of our trials.

Our field research provides fresh data that is used to improve products, and support interpretation of results in inSITE – our soil and plant testing decision support system. The information also helps Area Managers to stay up to date and work with customers to choose the best fertilizer strategy.

For more information about our field research and how it can benefit you, speak to your local Area Manager.

You can also view our trial results on summitfertz.com.au/field-research



In-Field Monitoring

Our range of in-field monitoring tools enables decisions to be made to both reduce risk and optimize growth and yield.

Fuel Gauges

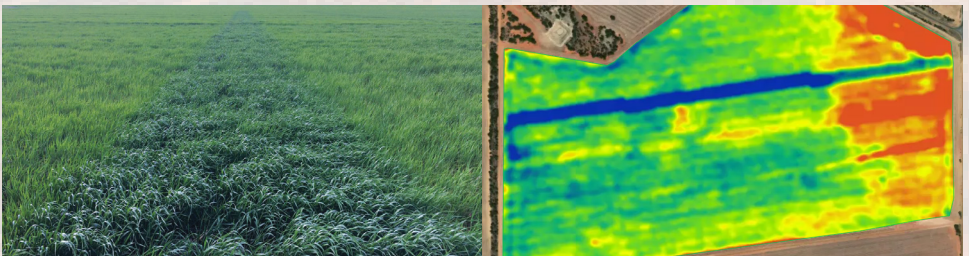
A fuel gauge is a strip placed in the paddock (typically 2m x 100m) containing a non-limiting rate of a specific nutrient. Applied across a wide range of crops & pastures, these are a way to monitor in-season nutrients and are assessed throughout the growing season by our Area Managers.

Nitrogen is the most common fuel gauge and is used to determine N requirements for the current season by combining NDVI with Summit's in-season N Calculator. They are also an excellent plant sampling site for determining 'hidden hunger' and guiding nutrition strategies for following seasons.

SaT Gauges

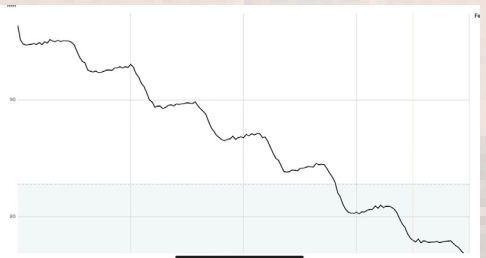
SaT Gauges are farmer applied nitrogen fuel gauges (with a boomspray or spreader) that ideally cross several different production zones.

These are assessed using satellite NDVI and give a broader picture of nutrition requirements, with the added benefit of on-farm assessment at harvest via yield maps



CropX

CropX integrates soil sensor technology with digital platforms to help growers better understand and utilize available soil moisture. The hardware includes soil sensors, rain gauges and weather stations; data is able to be viewed by growers via desktop or App, helping make smarter decisions.



Product Range

Products	Nutrient Content (%)										Bulk Density (t/m ³)
	N	P	K	S	Ca	Mg	Cu	Zn	Mo	Mn	
CROPPING RANGE											
Activate	11.1	22.7		1.9			0.10	0.20			0.95
AllMAP	14.1	14.2		8.4							0.98
AllMAP & Zn	13.8	14.2		8.2				0.20			0.98
AllRich	16.0	8.7		12.5							1.00
AllRich TE	15.9	8.6		12.4			0.20	0.40			1.00
AllStar	13.9	14.5		8.0			0.10	0.20			0.98
Cereal	12.5	18.6		5.0			0.10	0.20			0.96
CropGold	16.0	11.6		12.7							0.98
CropRich	17.0	9.0		14.9							0.99
CropRite	13.2	17.7		6.5							0.96
CropStar®	15.0	14.0		10.4							0.97
CropYield® (*)	17.5	20.0		1.8			0.05	0.10			0.98
DAP (*)	18.0	20.0		1.7							0.97
DAP Special (*)	16.7	16.1		5.7			0.07	0.13			1.00
DAPSZC® (*)	17.0	20.1		2.0			0.10	0.20			1.00
Gusto (***)	10.0	12.0	12.0	6.5			0.10	0.20			1.12
GustoGold (***)	10.1	13.1	10.8	6.0			0.11	0.21			1.10
GustoRich (***)	11.2	11.3	9.6	7.7			0.08	0.16			1.10
GustoRite (***)	10.4	15.7	7.8	4.9			0.10	0.19			1.06
GustoStar (***)	10.3	14.7	9.0	5.4			0.10	0.20			1.08
Legume	10.1	20.5		3.5						3.00	0.98
Legume K	7.3	14.8	12.5	3.2						3.00	1.01
Legume Plus	9.0	18.2		5.1						6.00	1.00
MAP	11.2	22.8		1.9							0.95
MAPRite	12.9	17.9		5.6							0.97
MAPRite & Zn	12.3	18.3		5.0				0.30			0.97
MAP Trace	11.1	22.6		1.9			0.15	0.30			0.95
MAP Manganese	11.2	22.8		2.1						0.32	0.95
MAP & Zn	10.0	21.9		1.5				1.00			0.95
MAP & Zn Lite	10.6	22.4		1.7				0.50			0.95
MAP TE	11.2	22.7		1.9			0.05	0.10			0.95
MaxamGold	16.1	11.3		13.0			0.08	0.15			0.98
MaxamRich	16.5	9.4		13.8			0.03	0.05			0.99
MaxamRite	12.9	18.6		5.9			0.10	0.20			0.96
MaxamStar	14.5	14.9		9.4			0.12	0.25			0.97
Vigour® (**)	10.0	12.0	12.0	5.0			0.10	0.20			1.03
Vigour Boost (**)	8.6	11.6	16.4	3.9			0.09	0.18			1.03
Vigour Mn (**)	9.7	13.6	9.0	5.0			0.08	0.15		1.50	1.02
Vigour Rich (**)	10.2	13.8	10.0	4.5			0.10	0.20			1.02
Vigour Rite (**)	10.5	16.9	6.5	3.6			0.10	0.20			0.99
Vigour Star (**)	10.3	15.2	8.4	4.1			0.10	0.20			1.01
ZincPlus	11.4	21.2		2.9				0.20			0.96

Product Base

* DAP based product

** MOP based product

*** SOP based product

Product Range

Products	Nutrient Content (%)										Bulk Density (t/m ³)
	N	P	K	S	Ca	Mg	Cu	Zn	Mo	Mn	
NITROGEN, POTASSIUM AND SULPHUR RANGE											
MAXam	21.0			24.0							1.01
Muriate of Potash			50.0	0.7							1.10
NKS21	28.7		12.5	5.7							0.88
NKS32	25.5		16.5	5.3							0.91
NitroMop	23.0		25.0	0.4							0.93
NitroPlus	33.5			12.0							0.85
Sulphate of Ammonia	21.0			24.0							1.07
Sulphate of Potash			41.5	17.0							1.28
Urea	46.0										0.75
UreaPlus	37.3			8.4							0.82
LIQUIDS RANGE											
MAXamFLO	22.0			6.2							1.26
UAN	32.0										1.32



Product Range

Products	Nutrient Content (%)										Bulk Density (t/m ³)
	N	P	K	S	Ca	Mg	Cu	Zn	Mo	Mn	
PASTURE AND HORTICULTURE RANGE											
Irrigation	29.7	4.0	5.0	6.3							0.88
Pasture	7.3	17.9		5.3	7.0						1.03
Pasture Potash 1 1	2.5	6.2	32.5	2.4	2.6						1.08
Pasture Potash 2 1	3.6	9.0	25.0	3.0	3.5						1.06
Pasture Potash 3 1	4.4	10.8	20.0	3.4	4.2						1.06
Pasture Potash 3 2	3.1	7.7	28.5	2.7	3.0						1.07
Pasture Potash 4 1	4.9	12.1	16.5	3.7	4.6						1.05
Pasture Potash 5 1	5.3	12.9	14.0	4.0	5.0						1.05
Summit Hort	12.1	4.7	10.5	15.5		1.2	0.04	0.08		0.30	1.09
Super Copper Moly		9.1		11.0	19.8		0.60		0.06		1.15
Super Copper Zinc		8.8		11.2	19.5		0.60	0.30			1.17
Super Copper Zinc Moly		8.8		11.2	19.4		0.60	0.30	0.06		1.17
SuperPasture	3.6	13.4		8.4	13.5						1.10
SuperPasture Potash 1 1	1.4	5.3	30.0	3.8	5.5						1.10
SuperPasture Potash 2 1	2.1	7.8	21.0	5.1	7.8						1.10
SuperPasture Potash 3 1	2.3	8.6	18.0	5.6	8.6						1.10
SuperPasture Potash 3 2	1.8	6.7	25.0	4.5	6.7						1.10
SuperPasture Potash 4 1	2.8	10.0	13.5	6.2	9.6						1.10
SuperPasture Potash 5 1	2.9	10.4	12.0	6.4	10.0						1.10
Superphosphate		8.9		11.5	20.0						1.17
Super Potash 1 1		4.5	25.0	6.1	10.0						1.14
Super Potash 2 1		6.0	16.5	7.9	13.4						1.15
Super Potash 3 1		6.7	12.5	8.8	15.0						1.15
Super Potash 3 2		5.3	20.0	7.2	12.0						1.14
Super Potash 4 1		7.1	10.0	9.3	16.0						1.16
Super Potash 5 1		7.4	8.5	9.7	16.6						1.16
FODDER RANGE											
Dairy	14.5	8.0	12.5	9.2							1.00
Dairy N	22.1	6.0	10.0	6.6							0.94
Dairy S	15.9	6.0	10.0	12.6							0.99
Dairy TE	12.0	8.5	12.5	9.9			0.06	0.11			0.99
Fodder Max	30.3		7.5	8.5							0.87
Graze Extra	26.2	3.9	8.5	6.2							0.89
Grass Boost	13.8		17.0	16.0							1.00
Hay	13.4	3.2	16.5	12.7			0.02	0.03			1.01
Hay Special	18.5	2.8	16.5	8.4			0.01	0.03			0.97
NKS Spring	22.0		14.0	10.8							0.94

Liquid Fertilizers

UAN and MAXamFLO are quality liquid fertilizers manufactured at our Kwinana, Geraldton and Esperance depots. They are stable in storage and offer farmers benefits in on-farm logistics and efficiencies in cropping operations.

	Analysis (%)		Bulk Density (t/m ³)
	N	S	
UAN (w/w)	32		1.32 (kg/l)
UAN (w/v)	42.2		0.76 (l/kg)
MAXamFLO (w/w)	22	6.2	1.26 (kg/l)
MAXamFLO (w/v)	27.7	7.8	0.79 (l/kg)

As MAXamFLO and UAN are sold by weight and generally used by volume, converting between tonnes and litres is often required when budgeting for and using liquid fertilizers.

Taking this into account, we have developed a series of easy-to-use fertilizer calculators on the Summit App.

Conversions	Tonnes	
	UAN	MAXamFLO
Litres		
10,000	13.2	12.6
20,000	26.4	25.2
30,000	39.6	37.8
40,000	52.8	50.4
50,000	66.0	63.0

- 1 litre of UAN weighs 1.32 kg.
- 1 litre of MAXamFLO weighs 1.26 kg.

Application Rates

N Rate (kg/ha)	Urea	UAN	MAXamFLO		UreaPlus	
	kg/ha	l/ha	l/ha	S (kg/ha)	(kg/ha)	S (kg/ha)
10	22	24	36	2.8	27	2.3
20	43	47	72	5.6	54	4.5
30	65	71	108	8.5	81	6.8
40	87	95	144	11.3	108	9.0
50	109	118	180	14.1	134	11.3

For more information on the compatibility of UAN and MAXamFlo with commonly used herbicides, insecticides and fungicides visit summitfertz.com.au or the Summit app.

Custom Formulation

Our blending facilities allow farmers to design fertilizers suitable to their individual paddock requirements with an extensive range of trace elements that can be added to our products.

Trace Elements for Blending			
Boron	Cobalt	Copper	Zinc
Iron	Magnesium	Manganese	
Molybdenum	Selenium	Sulphur	

ALOSCA Granular Inoculants

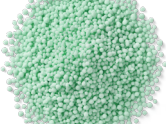
Summit partners with ALOSCA Technologies to offer granular legume inoculants pre-blended into fertilizer for added convenience to growers.

ALOSCA granular inoculants activate on the same seasonal triggers as the sown legume, maintaining viability of the Rhizobia bacteria until required by the plant.

- The below groups can be mixed with fertilizer to supply inoculant:
C (Sub-Clover), E (Pea/Lentil and Vetch) and GS (Lupin and Serradella)
- This service is available at all Summit depots.
- As this is a biological product, we require advance notice to ensure product availability.



N-Shield Range



- Single mode of action NBPT Urease inhibitor.
- Shown to slow down the process of urease enzymes breaking down applied urea and volatilizing NH_3 (gas) into the atmosphere.



- All the benefits of NBPT above.
- Dual mode of action NBPT Urease inhibitor & Dicyandiamide (DCD) denitrification inhibitor.
- Significantly reduced leaching of NO_3^- .
- Significantly reduces the worst GHG contributor (N_2O).

H2Optimise

- Soil wetter, moisture retention agent and humectant in one easy to handle product.
- Maximises crop emergence and soil water retention.
- Fully compatible with UAN and nitrification inhibitors without extra mixing, and can be stored safely for up to two years.
- Application rate of 2.5L/ha.



Fertilizer Coating

Our fertilizer coating service offers growers a safer, easier and more efficient option compared to completing the job on-farm. With our state of the art equipment, products can be coated on the majority of granules, which is vital to ensure efficacy and distribution.

Impact and Endure

- Active ingredient: Flutriafol. Label Rates from 100 to 400mLs per hectare.
- 2½ to 5 litres per tonne provides optimal coverage.
- Helps control Blackleg in Canola and various root and leaf diseases of cereals such as powdery mildew and Take-all.
- Long lasting residual effect.

Uniform®

- Active ingredients: Azoxystrobin and Metalaxyl-M.
- Label rates from 200 to 400mLs per hectare.
- Provides control of Rhizoctonia and Pythium in wheat & barley, in addition to control and suppression of various other fungal diseases.

Humates

FertiCoat is available to be applied on to granular fertilizer at despatch.

BiOWiSH Range

Improve nutrient uptake from your fertilizer, requiring no practice changes with an average yield response of 7.7% across 13 local trials in 2024.

BiO CL

Coated onto granular fertilizer to create an enhanced efficiency fertilizer specifically designed to optimize yield potential by improved nutrient uptake.

BiO CP

Water soluble bacterial solution for mixing and applying on-farm.

Available in 15kg boxes direct from your Local Area Manager.

Application Rate: 250 - 300g/ha

Nutrient Removal

Products									
	N	P	K	S	Ca	Mg	Cu	Zn	Mn
	kg/tonne					g/tonne			
Wheat	23	3	4	1.4	0.33	0.93	5	29	40
Barley	20	2.9	4.4	1.1	0.3	1.08	3	15	11
Oats	16	3	4	1.5	0.5	1.0	3	17	40
Canola	40	6.5	9.2	9.8	4.1	4.0	4	40	40
Lupins	51	3.8	8.8	3.1	1.7	1.7	5	30	60
Chickpeas	34	3.8	8.9	1.8	1.1	1.2	7	38	34
Faba Beans	39	3.8	9.8	1.4	1.1	1.0	10	28	30
Field Peas	37	4.0	8.2	2.0	0.7	1.2	5	35	14
Hay - cereal	15	1.0	15	1.0	0.5	1.1	5	12	40
Straw - cereal	7	0.7	10	0.7			3	3	
Milk	5.7	0.95	1.4	0.3	1.2	0.12			
Greasy Wool	170	0.26	15.8	28.5	1.2	0.3			
Sheep - Live	34	7.0	2.3	4.0	14.4	0.4			

Note: These are averages, with variances up to 50% under differing conditions.

Finance

We offer a range of payment options to help with flexibility

These include cheque, BPay, credit card (plus processing fee), funds transfer and a range of convenient credit options.

Financing your Fertilizer

Once approved for credit, bookings and collections are made even easier, as there is nothing to pay before pick-up. All our credit options apart from Deferred Harvest Terms are 'evergreen' meaning there is no need to reapply every time fertilizer is purchased.

Scan the QR code for more information:



Cheri Bowater
 Credit Manager
 Phone: **08 9439 8903**
cbowater@summitfertz.com.au



Disclaimer: Summit Fertilizers ABN 49 058 794 737 does not provide financial advice in any way. This is not a financial recommendation. We urge farmers to seek advice from a licensed financial advisor before entering into any credit contract with Summit. Full terms and conditions available on the Summit website.